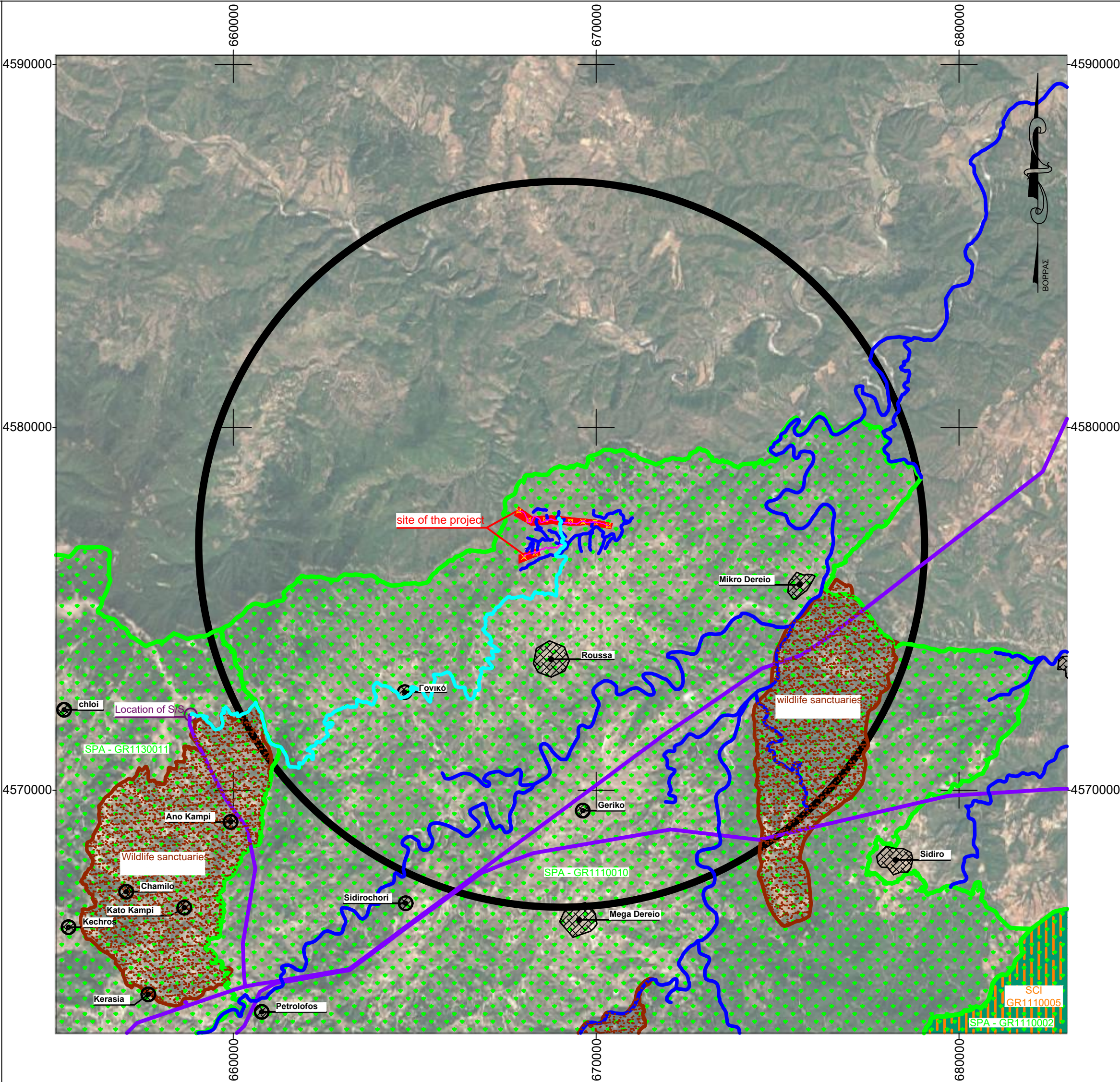


Template

Basemap: Google Earth
Scale: 1:100.000
Source: geodata.gov.gr

- NATURA - SPA
- NATURA - SCI
- NATIONAL PARKS
- WILDLIFE SANCTUARIES
- HYDROGRAPHIC NETWORK
- OVERHEAD HIGH VOLTAGE TRANSMISSION LINES
- LOCAL COMMUNITIES
- WIDER STUDY AREA OF THE PROJECT
- LOCATION OF WIND TURBINES
- INTERNAL INTERCONNECTION
INDICATIVE ROUTING OF UNDERGROUND CABLE LINE OF 33KV
M.S. FROM THE POWER LINES TO THE CONTROL HOUSE
- EXTERNAL INTERCONNECTION
INDICATIVE ROUTING OF UNDERGROUND CABLE LINE 33KV
FROM THE CONTROL SETTLEMENT TO THE SUBSTATION OF
THE UNDERGROUND CABLE LINE 33KV
- LOCATION OF THE SUBSTATION
- STUDY AREA - 10 km RADIUS



FGRID S.A.

28 Akadimias Street, olonaki - P.C: 10671, Athens

Tel : 210-3628829, E-Mail: info@fgrid.com

DEVELOPER:

EUROPEAN WIND FARMS GREECE ApS

PROJECT:

WIND POWER PLANT WITH A POWER OF 34,5 MW

RESEARCHER:

FOTOPOULOS GEORGIOS
M.SC. FORESTER - ENVIRONMENTALIST

LOCATION:

MUNICIPAL COMMUNITY OF MIKRO DEREIO,
MUNICIPALITY UNIT OF ORFEA, MUNICIPALITY OF
SOYFLI, REGIONAL UNIT OF EVROS - SITE - "LEYKI"

ISSUE:	AP. ΣΧΕΔΙΟΥ
MAP OF THE WIDER AREA	P24
XPONOS MEΛETHΣ: AUGUST 2024	KAIMAKA: 1: 100.000

CHECK	STAMP - SIGNATURE