

Table of the polygon coordinates (GGRS '87)
 Surface area = 452.389 sq.m.
 Perimeter=6.679.67 m

a/a	X	Y
K1	661233.44	4573878.59
K2	662271.02	4573044.35
K3	662635.34	4573048.15
K4	662874.55	4572839.53
K5	663573.99	4572767.21
K6	663585.12	4572928.25
K7	662971.69	4572991.08
K8	662706.37	4573210.51
K9	662337.18	4573200.58
K10	661368.00	4574016.89
K1	661233.44	4573878.59

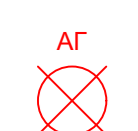

Table of coordinates (GGRS '87)

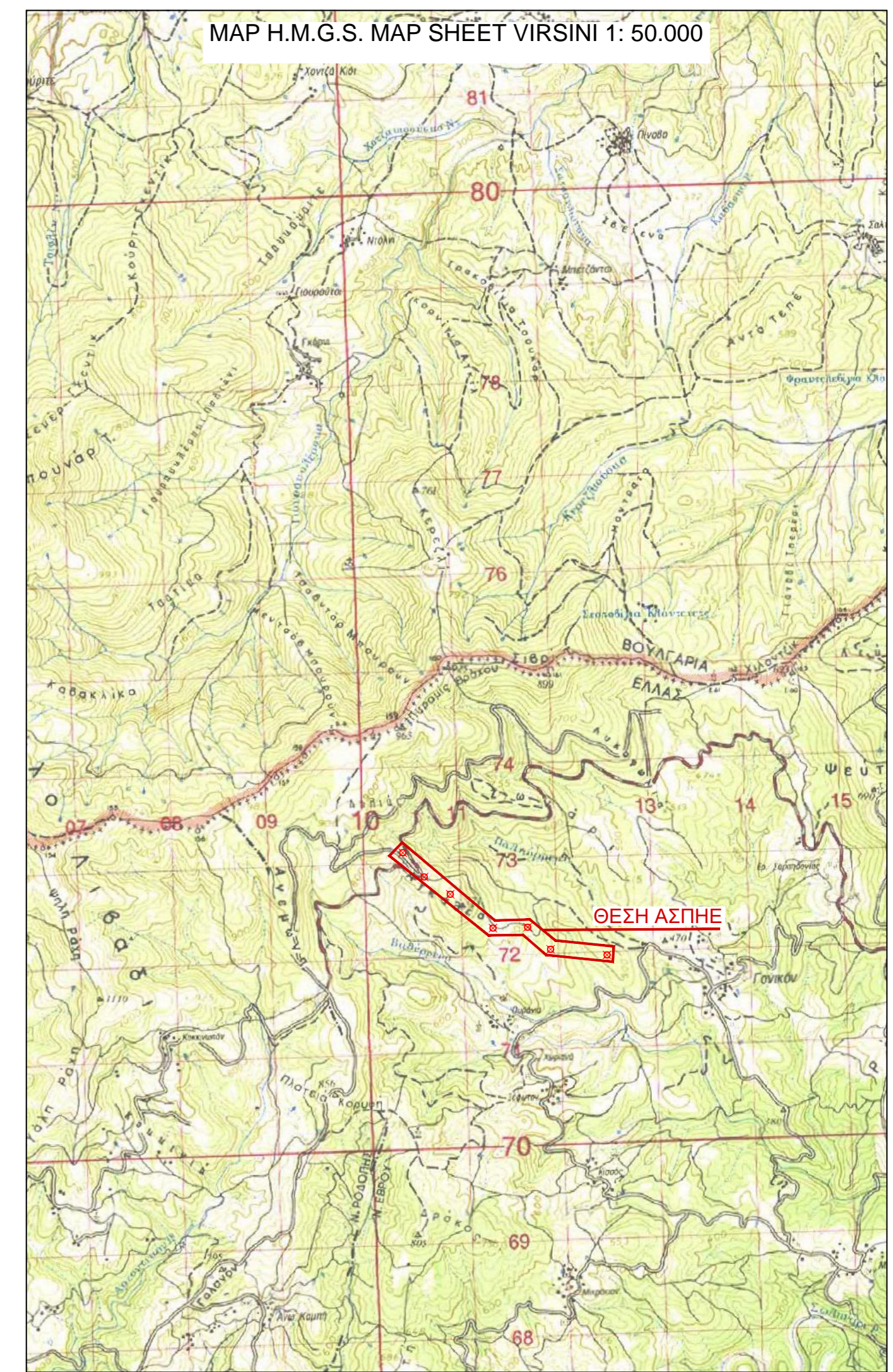
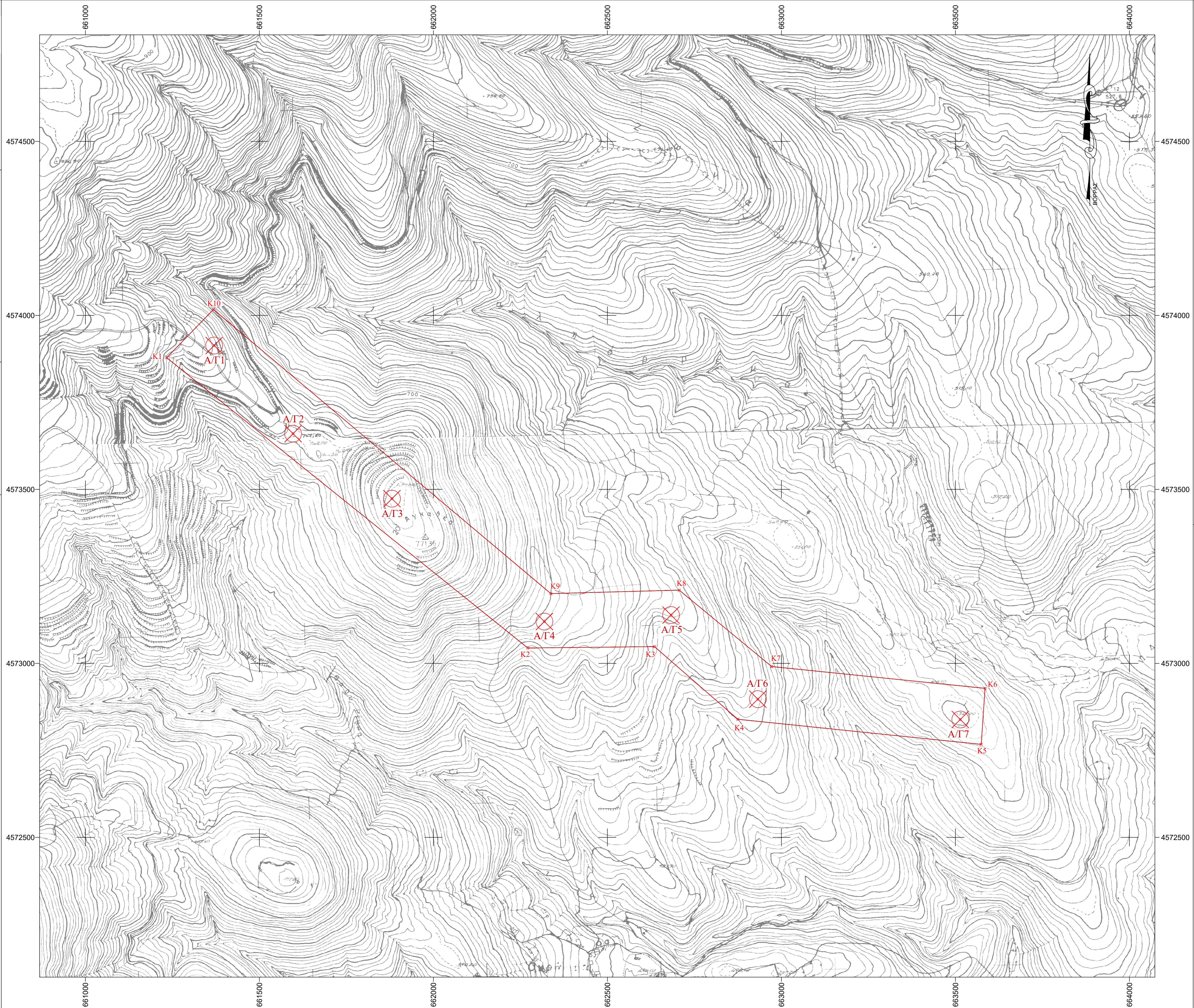
a/a	X	Y	Z
A/T1	661369.89	4573913.51	756.50
A/T2	661596.68	4573660.10	746.80
A/T3	661880.87	4573473.37	777.30
A/T4	662318.83	4573120.21	631.80
A/T5	662662.70	4573136.97	573.80
A/T6	662932.19	4572897.23	543.60
A/T7	663513.93	4572838.79	519.00

Table of coordinates of W/T
 (Projection System WGS '84)

a/a	φ	λ
A/T1	41° 18' 11.1159"	25° 55' 45.5643"
A/T2	41° 18' 02.7396"	25° 55' 55.0688"
A/T3	41° 17' 56.4826"	25° 56' 07.1034"
A/T4	41° 17' 44.7200"	25° 56' 25.5855"
A/T5	41° 17' 45.0641"	25° 56' 41.2402"
A/T6	41° 17' 37.0502"	25° 56' 51.7285"
A/T7	41° 17' 34.7304"	25° 57' 16.6700"

LEGEND

-  WIND TURBINE LOCATION
-  POLYGON VERTICES



FGRID FGRID S.A.
 Akadimias 28, Kolonaki - Postal Code 10671, Athens
 Τηλ : 210-3628829, E-Mail: info@fgrid.com

DEVELOPER
 EUROPEAN WIND FARMS GREECE ApS

PROJECT TITLE
 WIND POWER PLANT WITH A POWER OF 24.15 MW

RESEARCHER
 KALFAS GEORGE
 SURVEYOR ENGINEER

LOCATION
 M.C. MIKRO DEREIO, M.U. ORFEAS, MUNICIPALITY OF SOUFLI, REGIONAL UNITS OF EVROS SITE "AGATHEA"

ISSUE TITLE
 TOPOGRAPHIC MAP

DESIGN NO.
 T3

DATE OF ISSUE
 JULY 2024

SCALE
 1: 5,000

CHECK

SIGNATURE